



OPERATION GUIDE

Model #: FZSATJ-3

ZEPHYR

BATTERY POWERED BACKPACK SPRAYER

4-GALLON TANK CAPACITY





ATTENTION

Please read the following information carefully. User must read and understand the entire manual before operating the sprayer. Failure to follow instructions or improper use could lead to sprayer failure and possible serious injuries.

- **DO NOT RETURN SPRAYER TO STORE.** If you experience issues or have questions, contact our Support Team M-F 9am-5pm EST at 1-803-339-2500 or email support@wessol.com.
- Never spray flammable, caustic, acidic, heat, pressure, or gas producing chemicals.
- Always read and follow chemical manufacturer's instructions before use with this sprayer as some chemicals may be hazardous when used with this sprayer.
- Never leave chemicals or solutions sitting in your sprayer after using.
- After using sprayer with chemicals, it is important to spray with fresh water for 3-5 minutes to ensure residual chemicals in the gun, wand, tank, pump, and hose are cleaned out.
- Read and follow all instructions and cautions on label of products used in this sprayer.
- Do not store your sprayer in extremely high temperatures. Heat can lead to the build-up of pressure within the sprayer, resulting in a possible explosion.
- Do not try to make modifications to the sprayer. Always use FlowZone® branded replacement parts from the manufacturer.
- Do not use batteries that are wet or have been damaged.
- Inspect sprayer hose, power knob, wand, and gun for damage or loose connections before each use.
- Do not lift or carry the sprayer by the hose, or wand. Carry by the handle only.
- Only spray when the air is calm (no wind or air movement) to prevent

chemical spray from drifting into unintended areas.

- Keep sprayer and all chemicals out of the reach of children.
- Remove chemicals and thoroughly clean the sprayer after each use. Failure to clean the sprayer may cause contamination of subsequent applications, will cause premature spray wear, and void the sprayer warranty.

NEVER spray petroleum oil distillates, or acetone through your sprayer. If using essential oils, thoroughly clean the sprayer after each use with warm, soapy water.

NOTES

- The sprayer may have residual water in it when first opened. This is due to quality testing every sprayer undergoes before leaving our factory.
- Some parts may be located under the tank lid or in the battery compartment when first assembling the sprayer.
- **THIS SPRAYER IS DESIGNED TO OPERATE WITH ONLY FLOWZONE® BRANDED BATTERIES AND ADAPTERS. ANY OTHER BATTERIES COULD CAUSE SERIOUS HARM OR INJURY TO THE OPERATOR AND SERIOUS DAMAGE TO THE SPRAYER.**

This product contains chemicals, including lead, known to the state of California to cause birth defects and other reproductive harm.



When using chemicals, always wear protective clothing, including respiratory protection masks, gloves, eye protection, etc.



Do not dispose of Lithium-ion batteries with household waste; recycle where facilities exist.

OPERATING

- Do not allow familiarity with products to make you careless. Remember that a single moment of carelessness is sufficient to cause serious injury.
- Always wear eye protection with side shields when handling or operating this sprayer. Failure to do so could result in serious injury from chemical contact or flying dirt or debris.
- The Lithium-ion battery pack can be used in temperatures down to 32°F. When operating in cold temperatures, put the battery pack in the battery compartment and use the sprayer in a light duty application. After about a minute the battery pack will warm up and begin operating normally.
- Always use the correct power setting for your application. Using the correct PSI and flow rate will result in a safer and more thorough treatment. For calibration resources please contact FlowZone® technical support. (Note: Always refer to local, state, and federal laws and regulations regarding your application.)

- Do not use the sprayer if the power switch is not functioning correctly. Any power tool that cannot be controlled with the switch is dangerous and must be repaired.
- Remove battery before making any adjustments, changing accessories, or storing the sprayer. Disconnect the sprayer from the power source by removing the battery pack. These preventative safety measures reduce the risk of starting the sprayer accidentally.

STORING

- Store sprayer out of reach of children and do not allow persons unfamiliar with the power tool or these instructions to operate the sprayer. Power tools are dangerous in the hands of untrained users.
- Maintain sprayers and accessories. Check for misalignment or binding of moving parts, breakage of parts and any other condition that may affect the sprayers operation.

SAFETY

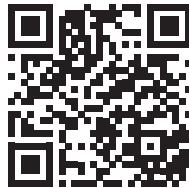
- Use the sprayer and accessories in accordance with these instructions, taking into consideration the working conditions and the work to be performed. Use of this sprayer for applications that it was not intended for could result in a hazardous situation.
- Keep handles and lift points dry, clean and free from oil and grease. Slippery handles and lift points do not allow for safe handling and control of the sprayer.
- Risk of fire or explosion: Never use this sprayer with liquids such as gasoline, ethanol, methanol, or any other flammable or gas producing chemicals. Do not use sprayer around sparks, flame, or smoke. Failure to adhere to these instructions may cause ignition, resulting in potential injury and damage to property.
- To reduce the risk of fire, personal injury, and product damage from a short circuit, never immerse the sprayer, battery, or charger in fluids. Do not place or store sprayer where it could fall or be pulled into a tub or sink. Corrosive or conductive fluids, such as seawater, certain industrial chemicals, and bleach or bleach containing products, etc., can cause a short circuit.
- Electric shock hazard: Never spray toward electrical outlets.
- Spray area must be well ventilated to avoid hazardous fume build-up. Always refer to the product label of the chemical being used for safety instructions and proper use practices.
- Avoid spraying on windy days. Spraying in windy conditions could cause chemicals to be blown onto persons, plants, or objects that are not intended to be sprayed.

DO NOT RETURN SPRAYER TO STORE, if you experience problems or have questions contact our Customer Support, M-F 9am-5pm EST at **+1(803) 339-2500**, or **email: support@wessol.com**, or find more information at **[fzspray.com/pages/troubleshoot](https://www.wessol.com/pages/troubleshoot)**.

SAFETY CONT.

- Do not store chemicals in the tank. Chemicals can degrade seals and hoses. Drain and clean sprayer after each use. Failure to do so may void the sprayer warranty.
 - Remove gloves before handling battery pack. Chemicals may be damaging to plastics.
 - Thoroughly inspect the interior, exterior, and all components of the sprayer before each use. Check for cracked and deteriorated hoses, leaks, clogged nozzles and missing or damaged parts. If damaged, ensure the sprayer is repaired before use. Many accidents are caused by poor maintenance.
 - Always remove the battery pack from the sprayer before performing any maintenance, storing or draining of the sprayer.
 - Do not eat or smoke while handling or operating the sprayer. Refer to the product label of the chemical being used for user safety practices.
 - Do not use the battery compartment for storage.
- Always use common sense and be cautious when using the sprayer. It is not possible to anticipate every situation that could result in a dangerous outcome. Do not use this sprayer if you do not understand these operating instructions or if you feel the work is beyond your capability.
 - Maintain labels and nameplates. These carry important information. If unreadable or missing, contact FlowZone® Support.

**Manuals are subject to updates.
Scan the QR code to view the
most updated manual online!**



or visit: www.fzspray.com/pages/operation-guides

REGISTER YOUR SPRAYER!

To take advantage of the 1-year Limited Warranty from WESSOL, LLC. Register your sprayer at the website below:

fzspray.com/pages/register

Please read and follow this manual carefully to ensure that you get the most out of your new sprayer. If you need assistance with the assembly or operation of your sprayer, please don't hesitate to contact WESSOL via the support methods below:

fzspray.com

spraysquad@fzspray.com

THE BATTERY

These batteries have been designed to provide maximum trouble-free life. However, like all batteries, they will eventually wear out. Do not disassemble battery pack and attempt to replace the batteries. Handling of these batteries especially when wearing rings or jewelry could result in serious burns.

- Recharge only with the charger specified by FlowZone®. A charger that is suitable for one type of battery pack may create a risk of fire when used with another batter pack.
- Only use sprayers specifically designated with their designated battery packs. Use of any other battery packs may create a risk of injury and fire.
- When battery pack is not in use, keep it away from other metal objects, like paper clips, coins, keys, nails, screws or other small metal objects, that can make a connection from one terminal to another. Shorting the battery terminals together may cause burns or fires.
- Under abusive conditions, liquid can be ejected from the battery; avoid contact. If contact accidentally occurs, flush with water. If liquid

contacts eyes, additionally seek medical help.

- Liquid ejected from the battery may cause irritation or burns.
- Do not use a battery pack or sprayer that is damaged or modified. Damaged or modified batteries may exhibit unpredictable behavior resulting in fire, explosion or risk of injury.
- Do not expose a battery pack or sprayer to fire or excessive temperature. Exposure to fire or temperature above 265°F (130°C) may cause explosion.
- Follow all charging instructions and do not charge the battery pack outside the temperature range specified in the instructions. Charging improperly or at a temperature outside the specified range may damage the battery and increase the risk of fire.

STORING BATTERY PACK LONGER THAN 30 DAYS

- Store the battery pack where the temperature is below 80°F and away from moisture.
- For long-term storage, regular charging of the battery is required

to maximize battery life. Check the battery level using the indicator lights every 4 weeks. Recharge the battery if it falls below 3 bars.

- Do not allow the battery to fully discharge.

BATTERY RECYCLING PREPARATION

- To preserve natural resources, please recycle or dispose of the batteries properly.
- This product contains Lithium-ion batteries. Local, state or federal laws may prohibit disposal of lithium-ion batteries in ordinary trash. Consult your local waste authority for information regarding available recycling and/or disposal options.

LITHIUM-ION BATTERY PACKS

- Lithium-ion batteries deliver fade free power for their entire run time. Lithium-ion batteries will not gradually lose power due to decreasing battery charge.

Instead, power from the battery pack will drop from full to zero once the full charge has been drained from the battery. Once this happens, recharging of the battery is required.

BATTERY PACK PROTECTION FEATURES

- Lithium-ion battery packs are designed with features that protect the lithium-ion cells and maximize battery life. If the sprayer stops during use, release the trigger to reset and resume operation. If the sprayer still doesn't work, the battery needs to be recharged.

If after 2 hours during the charging process, none of the LEDs are lit, remove the battery pack from the charger to avoid damaging the product. DO NOT insert another battery. Contact Customer Support for instructions on replacing the battery.

CONTENTS:

ABOUT

- 07 Specifications
- 08 What's Inside
- 09 Parts Diagram

SET UP

- 10 Sprayer Assembly
- 12 How to Spray
- 15 Aftercare

TROUBLESHOOT

- 17 Common Solutions
- 19 Parts & Accessories
- 21 Warranty

TOOL ONLY

- 23 QuickSwap™ Adapter Installation
- 24 Tool Only Parts Diagram

WHAT ARE THE CAPABILITIES OF YOUR SPRAYER?

This FlowZone[®] sprayer is a highly efficient sprayer that is suitable for spraying many kinds of chemicals and solutions.

Powered by a 18V Lithium-ion battery, this sprayer results in more efficiency than a manual sprayer. This sprayer can be operated continuously for up to 2 hours and spray more than 24 gallons per battery charge at a distance of over 25 feet!

FlowZone[®] Zephyr™ Specifications

Model Number	FZSATJ-3	Pump Type	Standard diaphragm
Battery Type	Lithium-ion	Spray Time	Up to 2 hours
Battery Voltage	18V	Pressure	Up to 40 psi
Battery Capacity	2.6Ah	Spray Distance	>20 feet
Battery Charging Time	1 hour	Tank Capacity	4 gallon
Battery Cycle Life	1,000 cycles	Flow Rate	0.2 gal/min
Battery Charger	21V/1A	Pump Life	500 hours



FZSATJ-3



WHAT'S INSIDE

For part numbers and replacement parts/accessories please see pages 9 & 19.

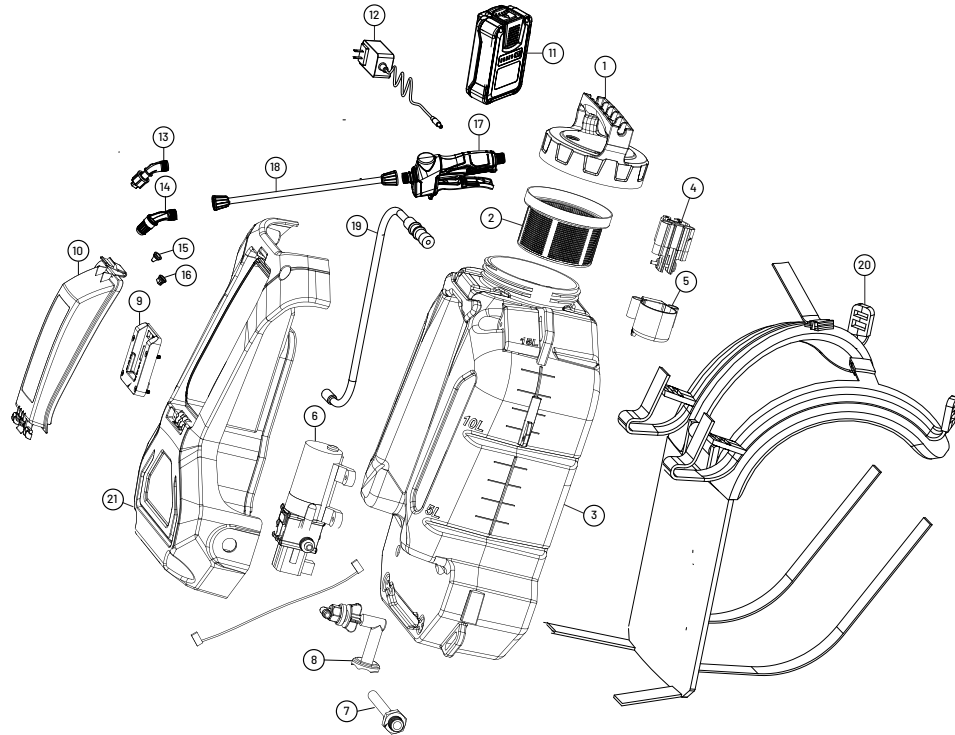
#	Name	#	Name	#	Name
1	Tank Lid	7	18V/2.6Ah Battery Pack	13	80° Fan Nozzle
2	4-Gallon Tank	8	21V/1A Battery Charger	14	0° Pin Stream Nozzle
3	Tank Strainer	9	Carbon Fiber Spray Wand	15	45° Fan Nozzle
4	Top Holster	10	Inline Spray Handle	16	Adjustable Nozzle
5	Bottom Holster	11	Backpack Straps		
6	Nuts & Bolts	12	UV-Resistant 5-Foot Hose		

FZSATJ-3

SPRAYER DIAGRAM

& Replacement Parts

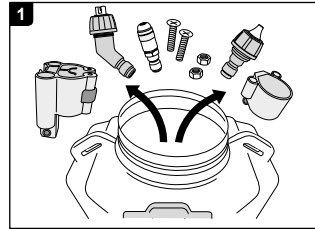
1	FZRARV	Tank Lid with Wand Holster
2	FZRABW	Tank Strainer
3	FZRAMZ	4-Gallon Tank
4	FZرانL	Upper Wand Holster
5	FZRANK	Lower Wand Holster
6	FZRATL	Pump
7	FZRAOG	Pump Outlet Hose & Nut
8	FZRAGK	Pump Inlet Filter
9	FZAATA	FlowZone Battery Adapter
10	FZRAEG	Battery Door Assembly
11	FZAAEN	18V/2.6Ah Battery
12	FZAAEL	21V/1A Charger
13	FZRASV	45° Fan Tip w/ 45° Base Assembly
14		Adjustable Cone w/ 45° Base Assembly
15		0° Pin Stream Nozzle Tip
16		80° Fan Nozzle Tip
17	FZRAOX-V1	Inline Spray Handle
18	FZRADK	18-in. Carbon Fiber Wand
19	FZRAOF	5-ft. UV-Resistant Hose
20	FZRATK	Backpack Straps
21	FZRATM	Front Cover Plate



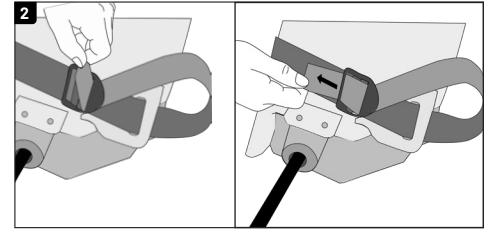
GETTING STARTED

Setting up your sprayer

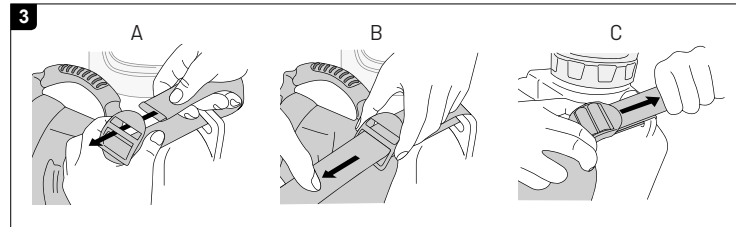
NOTE: The sprayer may have residual water in it when first opened. This is due to quality testing every sprayer undergoes before leaving our factory.



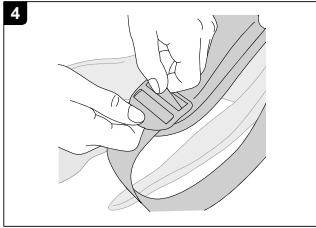
Take off the tank lid (1). Remove the nuts and bolts (6), and holsters (4, 5) from the tank strainer (3). Remove the nozzles (13, 14, 15, 16) from the battery holster. Set aside.



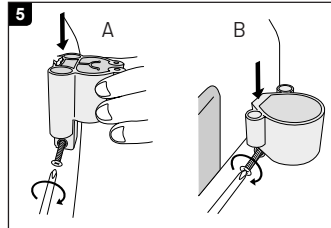
Lay the sprayer flat. Bring the backpack straps (11) to the bottom of the tank and insert through designated opening. Once inserted, tilt the buckle upward, insert on the underside of the buckle & pull through. Next, insert through the top side of the buckle and pull through.



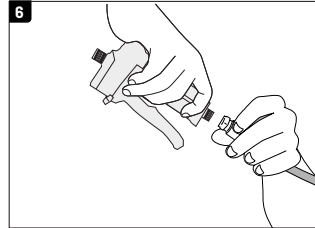
Next, slide the adjustable strap through the top tank loop. Continue by sliding the strap under and over the buckle fitting. Lightly tug to make sure the strap is secure. Repeat on other side.



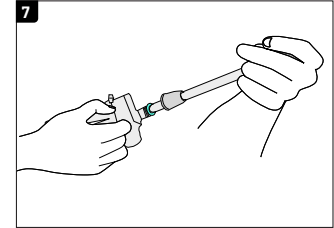
If the shoulder straps arrive detached, attach the bottom to the adjustable buckle using the same method as before.



Slide the top wand holster onto protruding holster. Insert a nut on one side of the hexagonal slot on the bottom of the holster and screw the bolt through the other side using a Phillip's head screwdriver until the bolt fastens into the nut. Repeat for the bottom holster/slot.



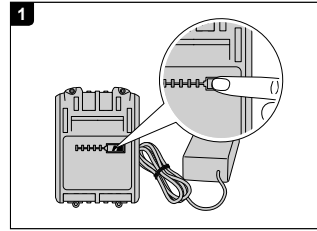
Take the inline spray handle (10) and attach it to the threaded fitting on the end of the hose (12). Tighten the fitting to ensure the gasket properly seals the connection.



If spraying with the carbon fiber spray wand (9), thread either end of the wand to the spray handle male threads. Make sure the o-ring sits flush with the threads, and then twist the cap into place.

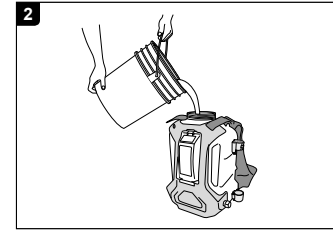
SPRAYING

Preparing to spray



Although the battery (7) may be partially charged upon delivery, it is essential to fully charge the battery prior to the first operation. An indicator light should flash while the battery is plugged in and charging.

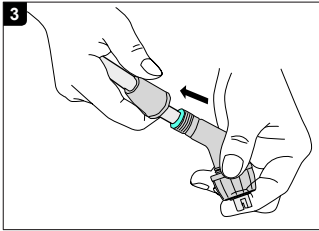
The charge level can be viewed by activating the indicator lights on the battery by pressing on the battery icon.



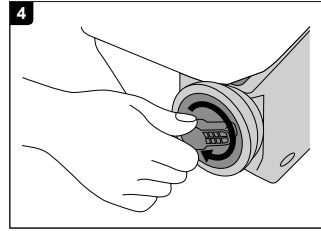
In a separate container, prepare the solution you wish to spray according to the chemical manufacturer's instructions. Remove the tank lid and carefully pour the solution through the tank strainer. Securely tighten the tank lid.



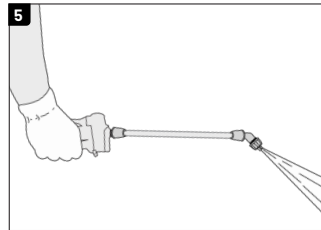
When using chemicals, always wear protective clothing, including respiratory protection masks, gloves, eye protection, etc.



Determine the nozzle you would like to use and place it onto the carbon fiber wand. Bring the turquoise o-ring to sit flush with the nozzle base. Once in place, bring the cap to the nozzle base and thread it to secure the nozzle. General flow rates for each nozzle can be found on page 14.



Turn the pump on by rotating the variable-pressure dial clockwise to the desired position. Reference flow rate and spraying pressure chart on Page 14.



To begin spraying, simply hold down the trigger on the spray gun.

Priming your sprayer





NOTE: Although rare, when spraying for the first time or after storing the sprayer for an extended amount of time, the sprayer may need help priming. If the sprayer turns on and you can hear the pump running, but no liquid is passing through the sprayer, you will need to manually prime the sprayer according to the steps below:

1. With the sprayer off, install the battery and make sure the battery cover is shut.
2. Remove the tank lid and take the tank strainer out to reveal the inside of your sprayer tank.
3. Locate the inlet filter at the bottom of the sprayer tank (See diagram 3 on page 18 for a visual representation). Gently wiggle the white circular piece until it comes apart from the inlet tube. Set aside.
4. Using a garden hose or similar delivery method, rapidly run clean water into the inlet tube where the mesh filter was. Turn your sprayer on at full power (speed 5). Squeeze the trigger until water comes out.
5. Reinstall the inlet filter with the mesh screen facing the bottom of the tank.



Scan for video instructions or visit <https://fzspray.com/pages/troubleshoot#priming-sprayer>

NOZZLE FLOW RATES

Nozzle Tips:		Flow Rate:	Pressure:
	45° Fan Nozzle	0.2 gpm	40 psi
	80° Fan Nozzle	0.2 gpm	40 psi
	0° Pin Stream Nozzle	0.3 gpm	10 psi
	Adjustable Nozzle	Cone	0.2 gpm 40 psi
		Stream	0.3 gpm 10 psi

NOTE

The included nozzles are engineered for a low flow rate. These nozzles are **only** compatible with the Zephyr™, and will cause damage to the pumps if used on other FlowZone Series 2.5 / 3 sprayers.

AFTERCARE

Sprayer maintenance

CAUTION: Failure to properly rinse out the sprayer may cause chemical residue build-up that can clog or damage internal and external components. Leaving chemical liquids in the sprayer when not in use can lead to premature wear and voiding of the warranty. Never store the sprayer with chemical inside.

1. With the sprayer off, dispose of extra product based on the manufacturer's instructions. Rinse out any residual solution in the spray tank with warm soapy water. Then, spray fresh water through the sprayer for 3-5 minutes to clear the sprayer of chemicals.
2. Disconnect the spray gun from the hose and allow the hose to hang down towards the ground; draining the hose of liquid.
3. Thoroughly dry the sprayer tank and clear the nozzles and inlet filter of any build-up.
4. Store the sprayer in a dry, clean, and shaded place to protect it from extreme heat or frost.

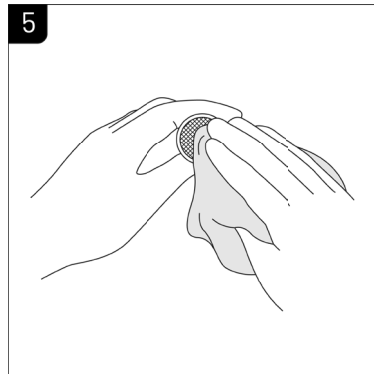
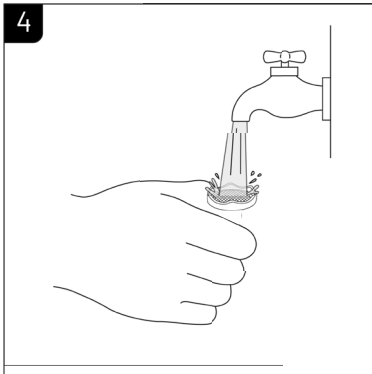
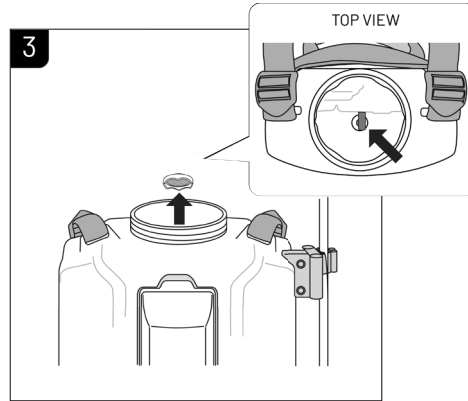
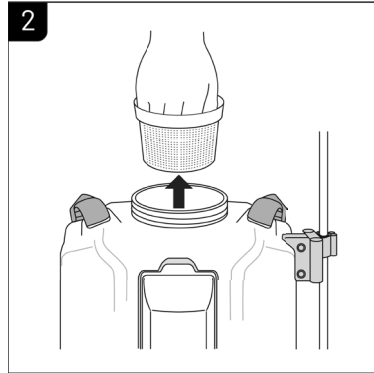
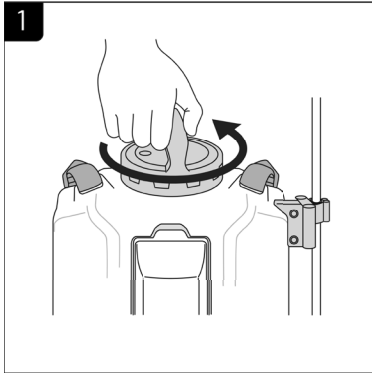
NOTE

For long-term storage, regular charging of the battery is required to maximize battery life. Check the battery level using the indicator lights every 4 weeks. Recharge the battery if it falls below 3 bars. Do not allow the battery to fully discharge.

Cleaning the inlet filter

NOTE: It is recommended you clean your inlet filter at least every other time your sprayer is used. Buildup at the inlet filter can cause damage to the pump and reduce spraying pressure.

1. With the sprayer off and battery removed, take off the tank lid.
2. Lift the tank strainer out of the mouth of the sprayer tank and set aside.
3. Reach into the sprayer tank and gently pry the inlet filter from the pump connection at the bottom of the tank.
4. Rinse the inlet filter with fresh water and get rid of any debris or particles.
5. Taking a clean cloth, wipe down the filter screen and dry the inlet filter. Reassemble the sprayer with the inlet filter and store the unit in protected area.



TROUBLESHOOTING

If your sprayer is not turning on or functioning as it should, visit fzspray.com/pages/troubleshoot for detailed instructions on how to properly determine the cause of the issue.

To contact Technical Support, email support@wessol.com or call **+1 (803) 339-2500**.

Problem	Possible Cause(s)	Solution
Sprayer does not turn on.	Dead battery	Charge the battery. If the battery will not charge, test the charger or contact Support for a replacement if applicable.
	Defective or damaged part	Follow the instructions at fzspray.com/troubleshoot or contact Support for guidance.
Leaks from tank.	Loose hose connection	Remove the plastic cover plate and locate the hose connection to the pump. Tighten the hose clamp.
Leaks from gun/nozzle.	Loose hose connection	Ensure the spray gun is fully tightened onto the threaded end of the hose.
	Missing or worn gasket	Locate the necessary part from page 19 and contact Support or visit fzspray.com to purchase.
Clogged pump / hose / gun / wand / nozzle	Not rinsing parts with water after use.	Take apart and thoroughly clean the parts. Rinse the sprayer with warm, soapy water after each use.

Problem	Possible Cause(s)	Solution
Dead battery.	Defective charger	If the LED indicator lights do not turn on or only one red LED is on after being on the charger for over 2 hours, test the charger with a multimeter. Replace if necessary.
	Damaged Lithium-Ion cells	If the battery receives no reading from a multimeter, a replacement battery is needed.
Pump makes a sound when sprayer is on, but output is limited.	Clog in filter or nozzle	Check parts for a clog. Using warm water, thoroughly clean the components.
	Clog in the pump	Remove the plastic cover plate and locate the pump. Remove then open the pump and clean out debris. Contact Support for assistance.

ACCESSORIES & PARTS

Included with Zephyr



FZRAMZ
4-Gallon Tank



FZRANK
Bottom Wand
Holster



FZAAEN
18V/2.6Ah Battery



FZRATK
Backpack Straps



FZRAQX-V1
Inline Spray
Handle



FZAAEP
21V/1A Charger



FZRARV
Tank Lid with
Wand Holster



FZRADK
Carbon Fiber Wand
with Threaded
Outlet (M18)



FZAATA
FlowZone
QuickSwap™
Battery Adapter



FZRAEG
Battery Door
Cover



FZRASV
Spray Nozzle
Kit



FZRATM
Front Cover
Plate



FZRANL
Top Wand
Holster



FZRAOF
5-Ft Hose



FZRATL
Diaphragm
Pump

Accessories and replacement parts can be purchased at your preferred distributor or online at fzspray.com.

ACCESSORIES & PARTS

For purchase separately



FZAATB
DeWalt®/Milwaukee® QuickSwap™ Battery Adapter



FZAATC
Makita Quick-Swap™ Battery Adapter



FZAATD
Bosch Quick-Swap™ Battery Adapter



FZAAQL
Telescoping Pole Hip Holster



FZAANY
16-ft. Telescoping Pole



FZAADA
20-Ft. Extension Hose



FZAAOY
2-Nozzle Boom Assembly



FZAAOZ
4-Nozzle Boom Assembly



FZAAMO
Nozzle Holster



FZAAOQ
Pistol Grip Gun w/ Carbon Fiber Wand & 110° Fan



FZAANS
Mounted Sprayer Rack



FZAAML
4-Gallon Sprayer Cover



FZAANE
Wand/Nozzle Flashlight Mount



FZAABC
Heavy Duty Trolley



FZAAMP
TeeJet Nozzle Assembly PVC Gaskets

Accessories and replacement parts can be purchased at your preferred distributor or online at fzspray.com.

WARRANTY

WARRANTY COVERAGE

WESSOL, LLC warrants to the original purchaser that the FlowZone® product will function as intended under normal use and consistent maintenance, subject to certain limitations and exclusions. At the discretion of WESSOL, LLC, we will repair or replace any parts found to be defective in material or workmanship without charge, apart from shipping and handling costs, during the covered warranty period.

WARRANTY PERIOD

The warranty period will begin from the date of retail purchase and exist for one (1) year, regardless of when the unit is placed in service. The warranty period is not extended if we opt to repair or replace the product in question.

WARRANTY CLAIMS

WESSOL, LLC reserves the right to require the return of the defective product, proof of purchase, and established product registration to file a claim under this warranty.

PRODUCT REGISTRATION

All sprayers purchased from FlowZone® or an authorized distributor must be registered online to validate the warranty and allow for warranty claim processing. Sprayers can be registered at fzspray.com/pages/register.

To activate the warranty on your sprayer, register it at fzspray.com/register. If the product fails to function as intended **DO NOT RETURN IT TO THE STORE**. To view the complete warranty or submit a claim, visit fzspray.com/warranty.

EXCLUSIONS AND LIMITATIONS

WESSOL, LLC only warrants products purchased from authorized distributors. Products purchased from unauthorized resellers or distributors are not subject to warranty services.

The limited warranty does not cover damages, loss, or injury resulting from transportation, storage, accident, improper use, neglect, modifications, normal wear, or operation not in accordance with the instruction manual. WESSOL, LLC reserves the right to change the design or specifications of any product without obligation to modify previously produced units.

ANY IMPLIED WARRANTIES, INCLUDING THE IMPLIED WARRANTY OF MERCHANTABILITY AND FITNESS FOR CONSUMER USE, ARE LIMITED TO THE DURATION SPECIFIED ABOVE. WESSOL, LLC'S LIABILITY IS LIMITED SOLELY TO THE REPAIR OR REPLACEMENT OF THE NON-FUNCTIONING PRODUCT OR PART. WESSOL, LLC EXCLUDES LIABILITY UNDER THIS WARRANTY FOR ANY AND ALL INCIDENTAL AND CONSEQUENTIAL LOSS OR DAMAGE.

In no event shall WESSOL, LLC be liable for any incidental, special, consequential or punitive damages, or for any costs, attorney fees, expenses, losses or delays alleged to be as a consequence of any damage to, failure of, or defect in any product including, but not limited to, any claims for loss of profits.

Some states do not allow limitations on how long an implied warranty lasts, or the exclusion or limitation of incidental or consequential damages, so these limitations or exclusions may not apply to you. This warranty gives you specific legal rights and you may have other rights which vary from state to state.

QUICKSWAP™

ADAPTER INSTALLATION

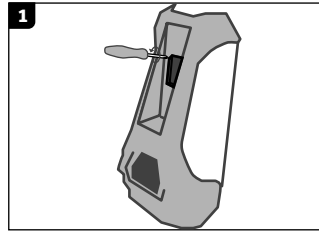
Installing your preferred battery adapter*

TOOL ONLY SPECIFICATIONS

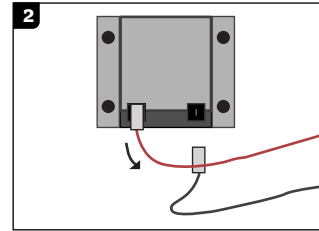
Model Number	FZSATJ-3TO
Adapter Battery Voltage	18V / 20V
Adapter Max Battery Ah	6Ah
Adapter Types	FlowZone®, Milwaukee® / DeWalt®, Makita®, Bosch®

*Skip this step if you're using a FlowZone battery

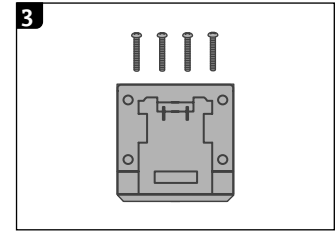
Tools Needed: Phillips head screwdriver, pliers



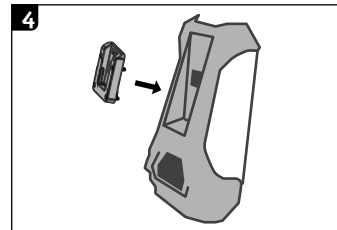
If using a 3rd party battery adapter, loosen the 4 bolts and remove the FlowZone adapter with a Phillip's head screwdriver.



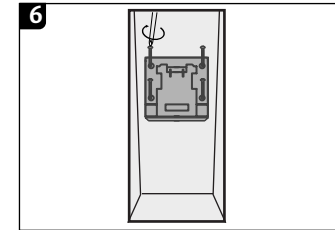
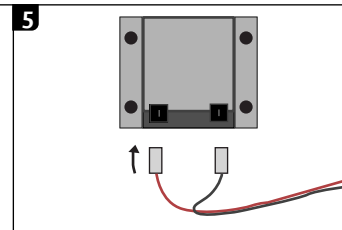
To detach the black (-) and red (+) wires, slide the rubber protector off. Using pliers, press on the small tab above the connector and pull.



Choose your preferred battery adapter and gather the x4 included bolts.



Align the adapter of choice with the holster slot. Slide the red (+) and black (-) wire connectors into the designated slot using pliers. Slide the rubber protectors back onto the connection points.



Place excess wire back inside the sprayer and tighten the 4 bolts using a Phillip's head screwdriver.

FZSATJ-3T0

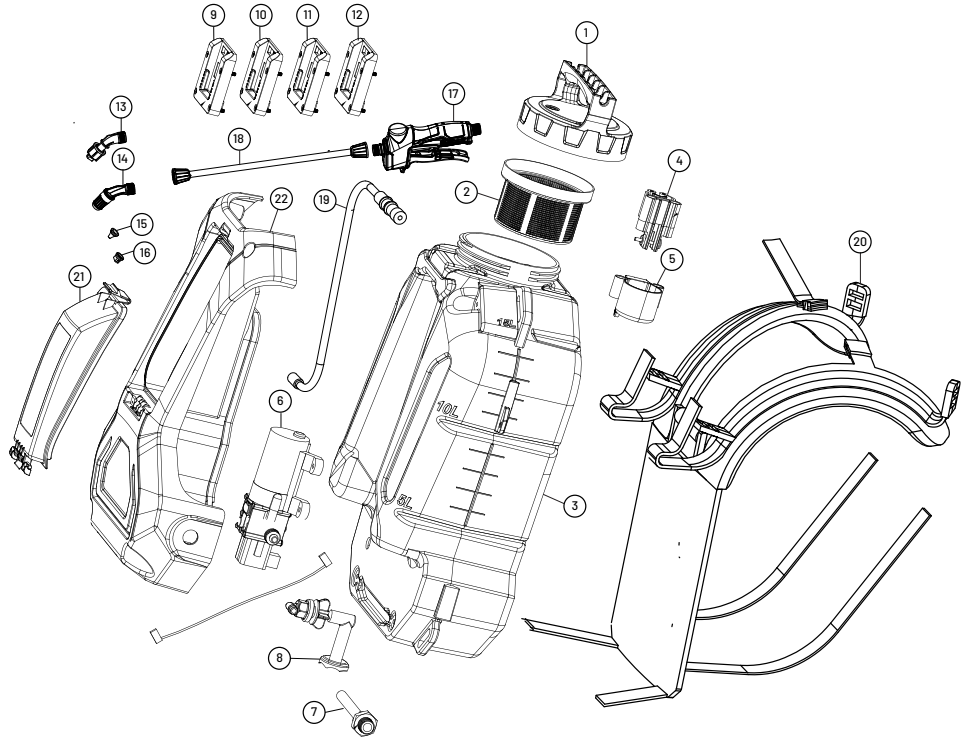
SPRAYER DIAGRAM

& Replacement Parts

TOOL ONLY VERSION

FZSATJ-3T0

1	FZRARV	Tank Lid with Wand Holster
2	FZRABW	Tank Strainer
3	FZRAMZ	4-Gallon Tank
4	FZANL	Upper Holster
5	FZRANK	Lower Holster
6	FZRATL	Pump
7	FZRAOG	Pump Outlet Hose & Nut
8	FZRAGK	Pump Inlet Filter
9	FZAATA	FlowZone QuickSwap™ Battery Adapter
10	FZAATB	DeWalt/Milwaukee QuickSwap™ Adapter
11	FZAATC	Makita QuickSwap™ Adapter
12	FZAATD	Bosch QuickSwap™ Adapter
13	FZRASV	45° Fan w/ 45° Base Assembly
14		Adjustable Cone w/ 45° Base Assembly
15		0° Pin Stream Nozzle Tip
16		80° Fan Nozzle Tip
17	FZRAQX-VI	Inline Spray Handle
18	FZRADK	18-in. Carbon Fiber Wand
19	FZRAOF	5-ft. UV-Resistant Hose
20	FZRATK	Backpack Straps
21	FZRAEG	Battery Door Assembly
22	FZRATM	Front Cover Plate





fzspray.com

support@wessol.com

CONNECT WITH US:

